



NAVILOCK®



**Navilock NL-443P Sirf Star IV GPS USB Empfänger
User Manual (61995)**

1. Einleitung

The NL-443P is a serial GPS receiver with internal antenna and SiRF Star IV chipset. The serial interface allows connection to a notebook, UMPC, Tablet PC or Car. Thanks to its universal MD6 connector, it can via an adapter cable various devices are used almost universally in various. Adapter cables are available as options.

The bottom of the receiver is rubberized and magnetically and thus provides an universal positioning. Thanks to its compact design, it is the perfect companion on any tour.

1.1. Package content *

- 1x Navilock NL-443P
- 1x 8cm CD ROM incl. manual

* Make sure that the product package contains all items before operation. If any item is missing or damaged, then please contact your dealer immediately.

Important health- and security information

If you use this product you should take precautions to avoid damages and legal consequences. Follow precisely all security- and handling advice and keep it carefully. Pay attention to all warning notices in the manual and on the device. To avoid injury, electric shock, fire and damages on the device, please pay attention to the following notices.

Electrical Security

This product is intended for operation with power via USB connection. Any other application can be dangerous and lead to loss of any warranty claim for this product.

NOTE: RECYCLE OR DISPOSE THE DEVICE ACCORDING TO THE APPLICABLE REGULATIONS.



SECURITY ADVICE REGARDING DIRECT SUNLIGHT

Make sure the device is not exposed to over humidity and extreme temperature. Don't let the device for too long in a vehicle or other places where the temperature can rise up to 60°C (140°F), e.g. on the dashboard, windowsill or behind a glass panel, which is exposed to high UV-Light or the sun. In this case the device or the vehicle can be damaged.

Damages, which require a repairing

Disconnect in the following cases the device from the USB port and contact an authorized repairing specialist or the dealer:

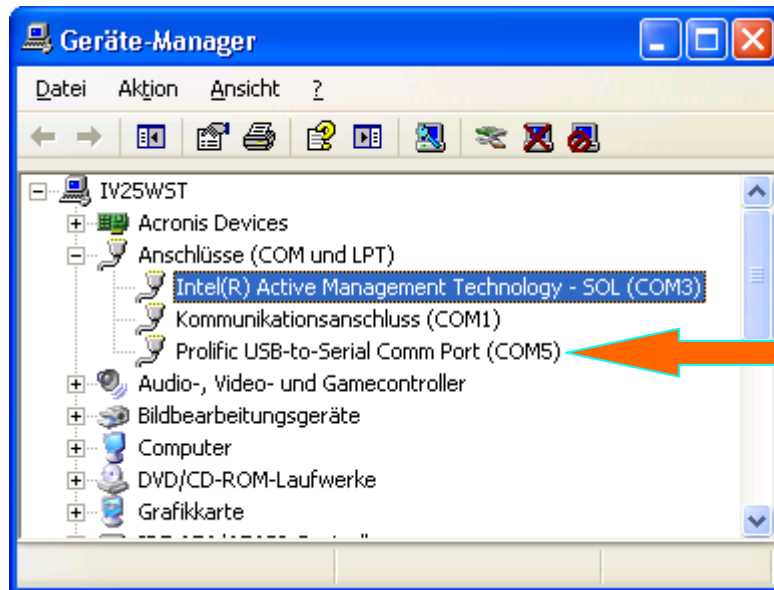
- Liquidity or any item came into the product.
- The product was exposed to rain or liquidity.
- The product fell down and is damaged.
- There are visible signs of overheating.
- The product does not work properly despite of correct operation.

Avoid using the device right after high thermal fluctuation. Condensation in the device might occur if you expose the device to high thermal or humidity fluctuation. In order to avoid damages wait until the humidity is evaporated, before using it.

NOTE: If you bring the device from a cold into a warm or from a warm into a cold environment, let the device take over the temperature before switching it on.

2. Operation i.e. with USB Adapter cable item Nr. 61264

2.1. Connect the USB receiver to a free USB port of your notebook etc.. The NL-443P will be recognized by your Windows OS and a your system will try to install a driver. Cancel this operation and start the respective installation from the CD ROM under the menu driver. Follow the instructions of the installation. After the installation is finished please restart your system. Afterwards the GPS COM port will be available under ports in the device manager. Please set this port in your navigation- or routeplanner software. Please do not use any other program at the same time, which accesses this port.



3. LED indication

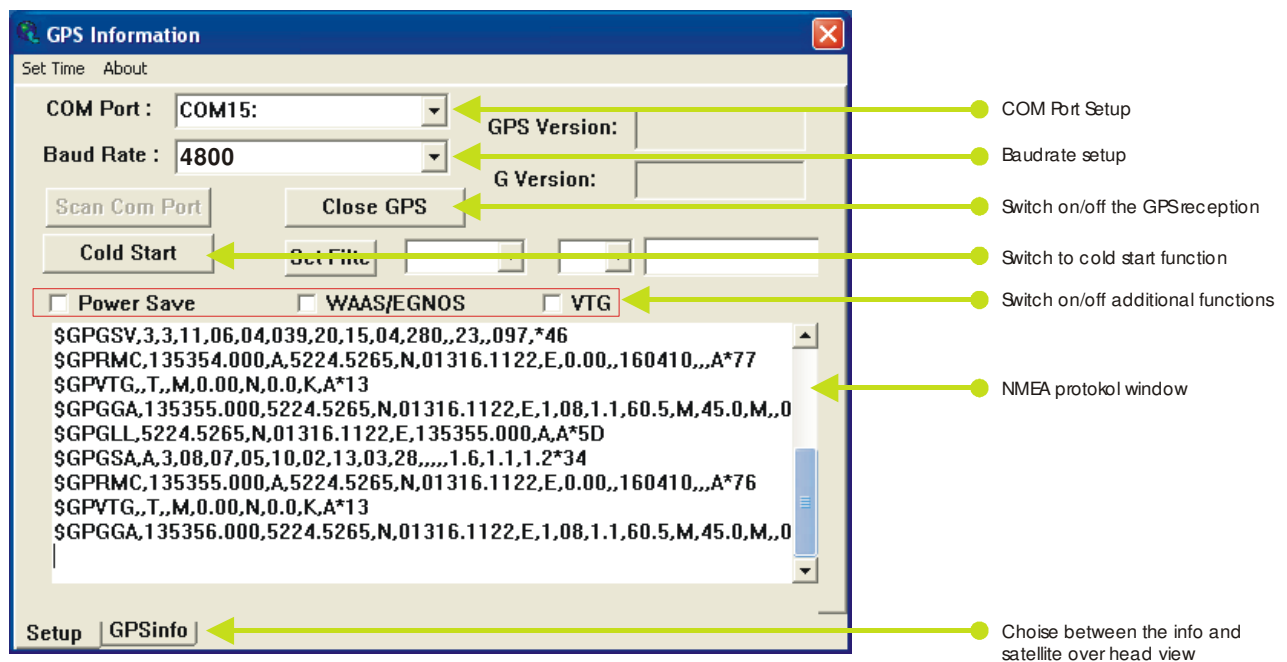
- Flash, with Satfix
- Light, without Satfix

4. Operating area

The NL-443P can be used as GPS receiver under Windows 98Se/Me/2000/XP/Vista/7/8, Linux, Mac OS. A respective driver can be found on the CD ROM.

5. Function test with GPS Info

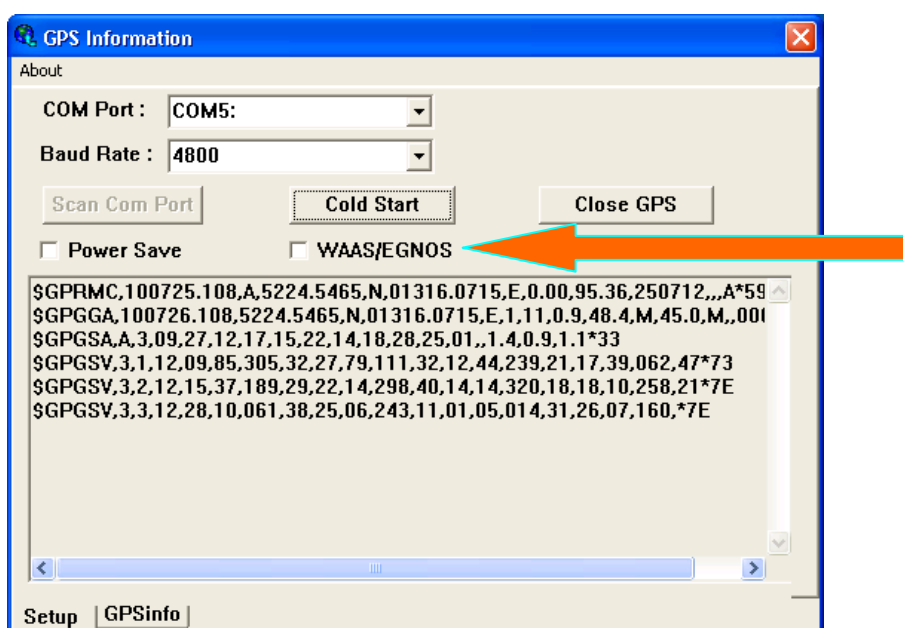
1. Install the GPS Info software on your device. Choose the respective version for your system. On the CD you can find versions for Windows 98Se, Me, 2000, XP, Vista, 7 and 8.
2. GPS Info is only a testing program and cannot be used for navigation or orientation. After testing it has to be closed! Please make sure on a Pocket PC that it is really closed and not still active in the background. It blocks the Com-Port and doesn't give access to a navigation- or routing software on the Com-Port.



If you have the NMEA data inside the protocol window, but not data in your GPS software, you have wrong GPS setup in it. Please setup the right baud rate and com port. Close GPS Info before you open a GPS software. It is not possible to use two GPS tools on one GPS Com port at the same time.

6. EGNOS Konfiguration with GPS Info

To switch over the NL-443P to WASS/EGNOS turn on, please switch over to the Setup mode, and set the hook selection with WAAS / EGNOS.



Risk of explosion when exposed to fire !

Explosion hazard upon exposure to fire! Don't expose the receiver to permanent temperature above 65 °C/140 ° F!

7. Possible Sources of Malfunction and Troubleshooting

- 7.1.** The blue LED does not light up after connecting it to the USB port. Make sure that the PC or notebook is switched on. When indicated you might test the USB port with another USB device. If another USB device works, please contact the support.
- 7.2.** The blue LED does not light even after a long time of waiting, but you still don't receive any Satfix. The NL-443P needs up to 30 min. on a different continent for its first Satfix. Therefore you need a free view to the sky. Choose a position for NL-443P which is far away from a house wall. You can also use the included USB extension cable. A house wall causes high reflection and adds to time delay of the Satfix. Also the notebook can effect the reception. Therefore a short extension cable is included in the package.
- 7.3.** Your PC does not support the auto-start function and does not start the CD ROM automatically. Please read under <http://msdn2.microsoft.com/en-us/library/Aa969329.aspx>
- 7.4.** The NL-443P got in contact with water jet (water jet like e.g. under the shower or heavy rain with installation on the roof). Do not connect the receiver to the notebook etc.. It will be completely destroyed and cannot be repaired anymore. Please send the receiver with the description „water damage“ to our support. The support will disassemble, dry and test the function of the receiver.

The Navilock repair center aims to be as fair as possible. Therefore we kindly ask you to give us the true reason for a defect. During the fault analysis, the support needs to find out if a third party, a water damage, a downfall damage, over voltage or wrong handling might be the reason for that.



Often malfunctions are caused by minor errors. It is not always necessary to immediately replace a product, because this will not correct a malfunction that is not caused by the GPS hardware.

Before contacting your dealer, please contact Navilock support. This will provide you with help in a fast and easy manner, and help avoid unnecessary replacement.

In such cases, describe the malfunction as accurately as possible in writing, add the details for your device and the used software as well as operating environment (operating system, service pack version, CPU size and type, memory size, HDD type and interface, etc. and send an email to support@navilock.de.

A member of the support team will take care of your problem and work on a solution.

We hope you enjoy your Navilock product!

8. Technical Data

Chipset manufacturer/type	Sirf Star IV GSD4e GPS
Channels	48
Sensitivity	-163 dBm
Frequency	L1, 1575.42 MHz
C/A Code	1.023 MHz Chip Rate
Target accuracy:	
Horizontal Position	2,5m 2D RMS SBAS enable
Time	1 micro-second. synced with GPS time
Speed	0.1m/sec. 95% (SA off)
Date:	WGS-84
Protocol:	NMEA-0183 (secondary: Sirf binary), GGA, GSA, GSV, RMC, VTG, V 2.2 (VTG + GLL optional)
Detection rates:	
Hot start	8 s on average (with ephemeris and almanac)
Warm start	35 s on average (with ephemeris but no almanac)
Cold start	35 s on average (neither almanac nor ephemeris)
Re-acquisition	0.1 s average (interruption recovery time)
Update rate:	1 Hz
Baud rate:	4800
Dynamic conditions:	
Acceleration limit	Less than 4g
Height limit	18000 meter (60000 Feet) max
Speed limit	515 meter/sec. (1000 Knots) max
Power:	
Power connection	5V DC over USB or PS/2 connector
Current consumption	average 60 mA
Connection type :	serial MD6
Operating temperature:	-20 °C ~ 65 °C
Dimensions:	65 mm x 45 mm x 22 mm
OS Systems:	Windows 2000/XP/Vista/7/8, Linux Kernel 2.4 and all MAC OSX
Certifications	CE FC ROHS

9. Warranty period

Your GPS receiver will be repaired free of charge during the legal warranty period, provided the damage was not caused by external impact, moisture, fall or improper use. Your dealer will help you with words and deeds. Repairing goods can be send directly to

**Navilock Repair Center
Beeskowdamm 13/15
D-14167 Berlin-Zehlendorf**

Please send only parcels which are franked.

Please include a proof of purchase and a detailed error description. "doesn't work" or "defect" is not detailed. Please point out also how often a defect occurs. **Transmittals which are not franked cannot be accepted, due to logistic reasons.**

10. Support

If you have further questions, please contact our customer support:
support@navilock.de / www.navilock.com

You can find current product information on our homepage: www.navilock.com

11. Final clause

Information and data contained in this manual are subject to change without notice in advance. Errors and misprints excepted.

12. Copyright

No part of this user's manual may be reproduced, or transmitted for any purpose, regardless in which way or by which means, electronically or mechanically, without explicit written approval of Navilock.

Navilock is a registered trademark and cannot be used without the written permission of its trademark owner. In no case shall it be modified or amended.

13. Third party trademarks

Marks, trademarks, products names and logos of third parties that are shown in this documentation are marks or trademarks of their respective owners.

Declaration of conformity

The CE declaration of conformity can be found under <http://www.navilock.de/support/> in the section of declaration of conformity.



WEEE-notice

The WEEE (Waste Electrical and Electronic Equipment)-directive, which became effective as European law on February 13th 2003, resulted in an all out change in the disposal of disused electro devices. The primarily purpose of this directive is the avoidance of electrical waste (WEEE) and at the same time the support of recycling and other forms of recycling in order to reduce waste. The WEEE-logo on the device and the package indicates that the device should not be disposed in the normal household garbage. You are responsible for taking the disused electrical and electronically devices to a respective collecting point. A separated collection and reasonable recycling of your electrical waste helps handling the natural resources more economical. Furthermore recycling of electrical waste is a contribution to keep the environment and thus also the health of men. Further information about disposal of electrical and electronically waste, recycling and the collection points are available in local organizations, waste management enterprises, in specialized trade and the producer of the device.

Compliance with RoHS

This product complies with the directive 2002/95/EC of the European parliament and the council from January 27th 2003 concerning the restricted use of dangerous substances in electrical and electronically devices (RoHS) as well as its modification. This product complies with the directive 2011/65/EU which becomes effective from January 3rd 2013.

FCC Class

An FCC certification of radiation limits on digital devices. Class A certification is for business use. Class B, for residential use, is more stringent in order to avoid interference with TV and other home reception. See Part 15, Subpart B, of the Federal Register (CFR 47, Parts 0-19).

EU Import:

Tragant Handels- und Beteiligungs GmbH Beeskowdamm 13/15, 14167 Berlin, Germany