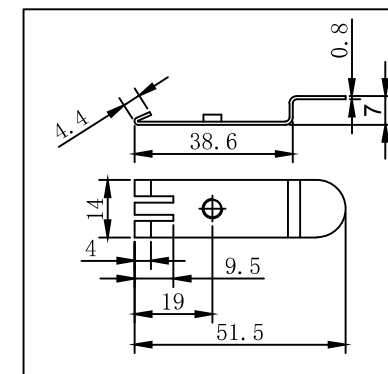


ITEM NO.	Color	Logo Color
43407	Gray RAL7035	BLACK
43409	Black RAL9005	WHITE



③

NOTE:


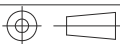
1. RoHS 2.0 and Reach Complinat
2. Operating temperature: $-40^{\circ}\text{C} \sim +70^{\circ}\text{C}$
3. Storage temperature: $-40^{\circ}\text{C} \sim +70^{\circ}\text{C}$
4. Operation humidity: $10\% \sim 85\%$
5. Storage humidity: $10\% \sim 85\%$

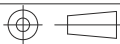
Accessory:

1. Cable Tie (75X1.9mm) × 4Pcs
2. Foot pad × 4Pcs
3. M4*10mm Screw × 2pcs
4. Expanded screw × 2 Set
5. DIN RAIL holder × 2pcs

Packing: 1pcs/Inner Box++Delock label

②	Top Cover	1.0mm thickness Metallic Panel with plastic powder cladding	1	
①	Bottom Panel	1.2mm thickness Metallic Panel with plastic powder cladding	1	
NO.	PARTS NAME	SPECIFICATION STANDARD	QT'Y	
		NEW	2021-02-	
BY	CHK	REVISION RECORD MODIFICATIONS	DATE	

		Title: Keystone Patch Panel 4 Port	
Unit	mm	Item no.	43407 / 43409
Projection		Barcode	4043619434077 / 4043619434091
Rev	A	File No.	

Date	2022 / 07 / 18
Unit	mm
Projection	
Rev	A