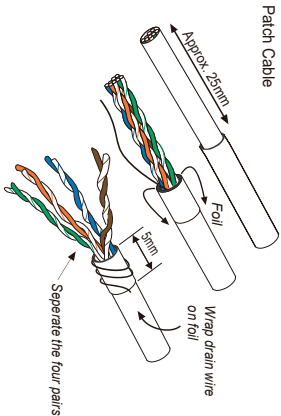


Assembly Instruction

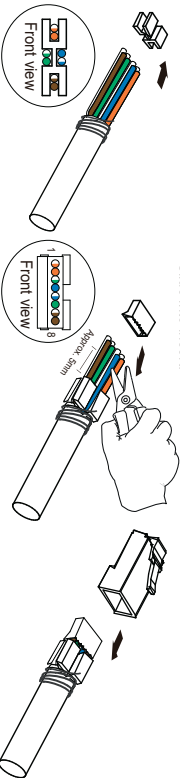
Terminate a new RJ45 modular plug

Patch Cable

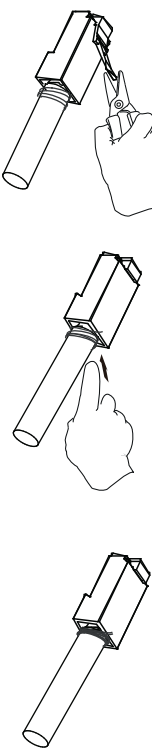


JACK PIN DESIGNATIONS		TIA / EIA T568A	TIA / EIA T568B	INDUSTRIAL
1	White/Green	White/Green	White/Orange	Yellow
2	Green	Orange	Green	Orange
3	White/Orange	White/Green	White	White
4	Blue	Green	Blue	Blue
5	White/Blue	White/Blue	White/Blue	
6	Orange			
7	White/Brown			
8	Brown			

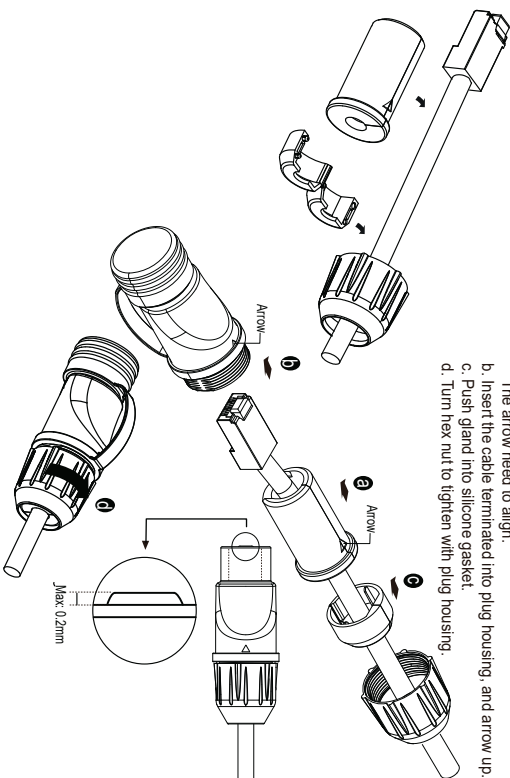
- Slide conductors into insert
- Leave space around 5mm and cut off the excess conductors. Slide into insert.
- Push cable insert into plug and crimp it by RJ45 termination tool.



- Cut off the latch
- Wrap the drain wire and secure it with RJ45 metal shell.
- Assembly process completed



- Insert the back cover into the wire cable, and then snap in the silicone gasket and gland into the wire.
- Assembly sequence
 - Push silicone gasket near to the plug, turn the indentation slot of the silicone gasket to align the plug step. The arrow need to align.
 - Insert the cable terminated into plug housing, and arrow up.
 - Push gland into silicone gasket.
 - Turn hex nut to tighten with plug housing.



Title: RJ45 Modular Plug Cat.6A with feed-through coupler and protective cap

Item no. 67056

Barcode 4043619670567

File No. 88467

Dat 2024 / 06 / 11

Unit mm

Projection

Rev A