

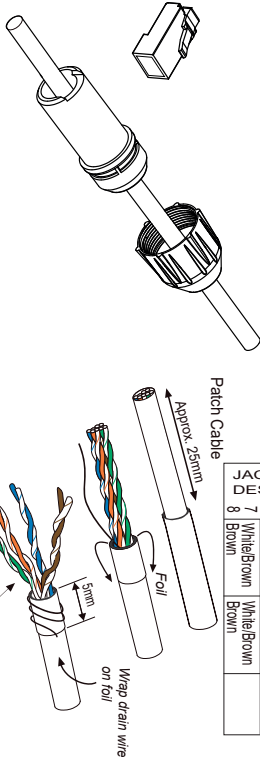
Assembly Instruction

1. Slide cable into hex nut and silicone gasket, as below shown.

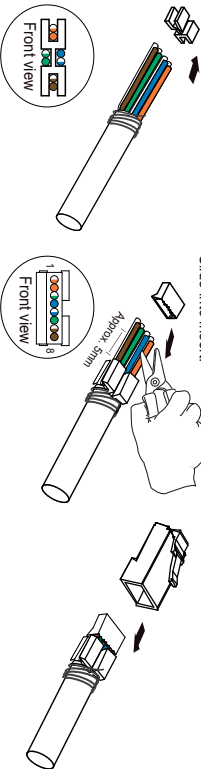


JACK DESIGNATIONS	TIA / EIA		TIA / EIA		INDUSTRIAL
	TS68A	TS68B	TS68B	TS68B	
1	White/Green	White/Green	White/Orange	Yellow	Yellow
2	Green	Orange	Orange	Orange	Orange
3	White/Orange	White/Green	White/Green	White	White
4	Orange	Green	Green	Blue	Blue
5	White/Blue	Blue	White/Blue		
6	Blue	White/Blue	White/Brown		
7	White/Brown	White/Brown			
8	Brown	Brown			

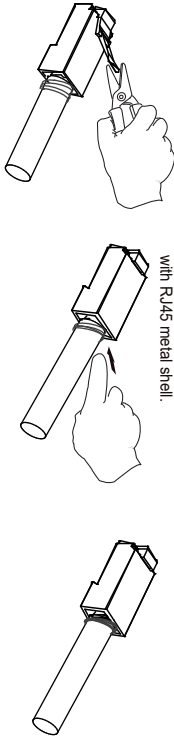
Patch Cable



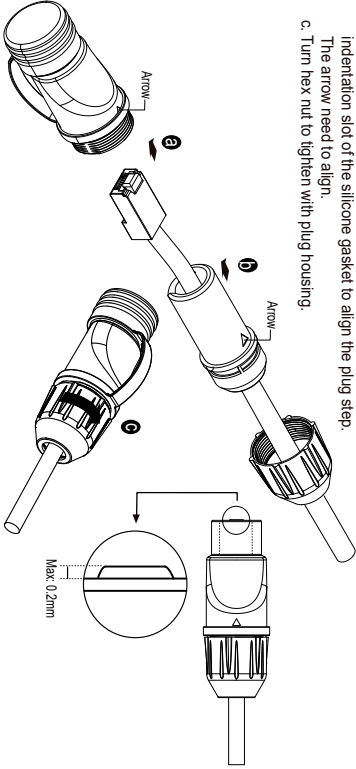
2. Slide conductors into insert. 3. Leave space around 5mm and cut off the excess conductors. Slide into insert. 4. Push cable insert into plug and crimp it by RJ45 termination tool.



5. Cut off the latch. 6. Wrap the drain wire and secure it with RJ45 metal shell. 7. Assembly process completed.



8. Assembly sequence
a. Insert the cable terminated into plug housing, and arrow up.
b. Push silicone gasket near to the plug, turn the indentation slot of the silicone gasket to align the plug step. The arrow need to align.
c. Turn hex nut to tighten with plug housing.



Title: RJ45 Modular Plug Cat.6A
IP66 dust and waterproof

Unit mm Item no. 67067

Projection Barcode 4043619670673

Rev A File No. 88467

Dat 2024 / 06 / 11