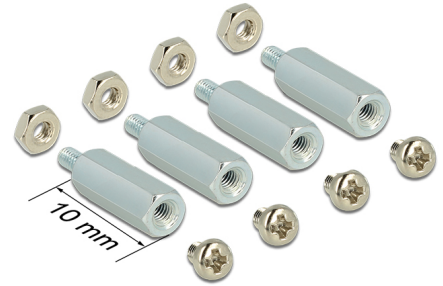


Delock Mounting Kit for Raspberry Pi 10 mm

Description

Use this accessory set by Delock to connect different add-on modules e.g. adapter or converter to your Raspberry Pi board. Furthermore you can use this accessory to mount several Raspberry Pi boards on top of each other.



Item no. 18214

EAN: 4043619182145

Country of origin: China

Package: Zip poly bag

Technical details

- Raspberry Pi boards, converter and adapter can be mount on top of each other
- Connect adapter and converter to the Raspberry board
- 4 x M2.5 standoff, length 10 mm
- 4 x M2.5 4 mm screw
- 4 x nut

System requirements

- Raspberry Pi board

Package content

- 4 x screw
- 4 x nut
- 4 x standoff