

# Delock M12 Transfer Module Adapter 8 pin A-coded female to 9 pin terminal block for DIN rail

## Description

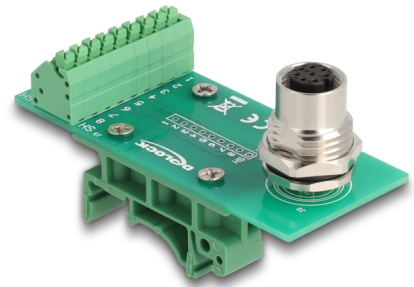
The **M12 adapter** by Delock enables a simple and **secure connection** between devices with M12 connectors and electrical circuits that use terminal blocks.

### Various areas of application

The adapter offers a **flexible solution** for various applications in industry, **automation technology**, **building automation** and other areas where a reliable connection is required.

### DIN rail mounting

With the clips included in the delivery content, the adapter can be attached to a **15 mm or 35 mm wide DIN rail**.



**Item no. 60659**

EAN: 4043619606597

Country of origin: China

Package: Zip poly bag

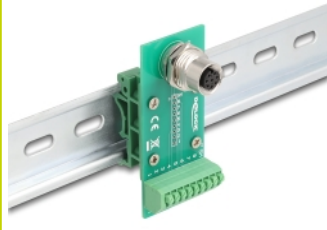
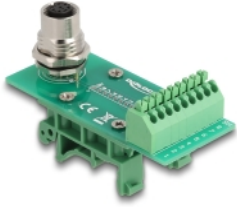
## Technical details

- Connectors:
  - 1 x M12 female 8 pin A-coded
  - 1 x 9 pin terminal block
- DIN rail mounting: 15 mm and 35 mm
- M16 external thread
- Cable gauge: 24 - 20 AWG
- Pin assignment: 1:1
- Pitch: 3.50 mm
- Operating temperature: -40 °C ~ 80 °C
- Dimensions (LxWxH): ca. 76.2 x 43.0 x 33.0 mm

## Package content

- M12 adapter
- 2 x DIN rail clip
- 4 x screw

## Images



## General

Mounting type:	DIN rail mounting: 15 mm and 35 mm
----------------	------------------------------------

## Interface

Connector 1:	1 x M12 female 8 pin A-coded
Connector 2:	1 x 9 pin terminal block

## Technical characteristics

Operating temperature:	-40 °C ~ 80 °C
------------------------	----------------

## Physical characteristics

Pitch distance:	3.50 mm
Conductor gauge:	24 - 20 AWG
Length:	76.2 mm
Width:	43.0 mm
Height:	33 mm