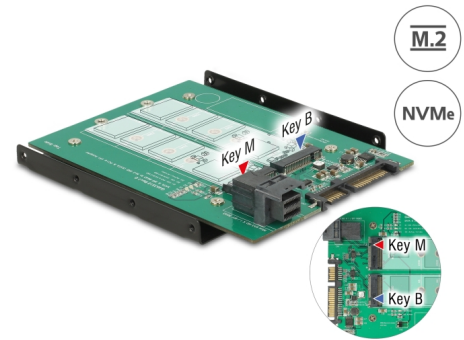


Delock 3.5" Converter SATA 22 pin / SFF-8643 NVMe > 1 x M.2 Key M + 1 x M.2 Key B

Description

This Delock converter enables the connection of a M.2 SSD in 2280, 2260, 2242 and 2230 format with key B and a M.2 SSD in 2280, 2260, 2242 and 2230 format with key M. It allows the possibility to connect a M.2 SSD based on PCIe and M.2 SSD based on SATA at the same time. The converter can be installed into your system internally through the SATA 22 pin interface while using a SATA M.2 SSD, or via the SFF-8643 interface while using a PCIe M.2 SSD.



Item no. 62704

EAN: 4043619627042

Country of origin: Taiwan,
Republic of China

Package: Retail Box

Technical details

- Connectors:
 - 1 x SATA 6 Gb/s 22 pin plug (for SATA SSDs)
 - 1 x 36 pin SFF-8643 female (for PCIe SSDs 2 or 4 lanes)
 - 1 x 67 pin M.2 key M slot (PCIe SSD)
 - 1 x 67 pin M.2 key B slot (SATA SSD)
- Interface: SATA / PCIe (2 or 4 lanes)
- Supports M.2 modules in format 2280, 2260, 2242 and 2230 with key M or key B+M based on PCIe or SATA
- Maximum height of the components on the module: 1.5 mm, application of double-sided assembled modules supported
- SATA 15 pin power connector always necessary
- LEDs for power and activity
- Supports NVM Express (NVMe)
- Maximum output current: 4 A (PCIe) and 3 A (SATA)

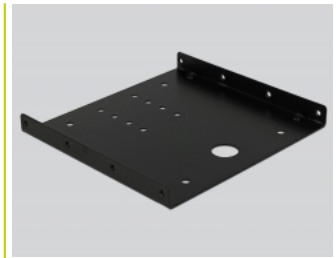
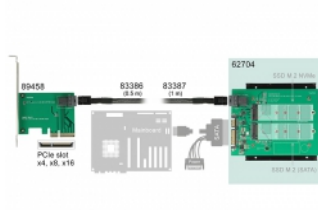
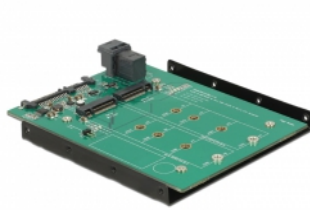
System requirements

- Linux Kernel 3.16 or above
- Windows 7/7-64/8.1/8.1-64/10/10-64/11
- A free SATA 22 pin interface
- A free SFF-8643 interface (PCIe SSD)

Package content

- 3.5" converter
- Mounting material
- User manual

Images



General

Form factor:	3.5"
Supported operating system:	Linux Kernel 3.16 or above Windows 10 32-Bit Windows 10 64-Bit Windows 7 32-Bit Windows 7 64-Bit Windows 8 32-bit Windows 8 64-bit Windows 8.1 32-Bit Windows 8.1 64-Bit
LED indicator:	power and activity
Supported module:	M.2 modules in format 2280, 2260, 2242 and 2230 with key B or key B+M based on SATA M.2 modules in format 2280, 2260, 2242 and 2230 with key M or key B+M based on PCIe
Maximum height of the components on the module:	1.5 mm application of double-sided assembled modules supported

Interface

Connector 1:	1 x M.2 NGFF based on PCIe
Connector 2:	1 x M.2 NGFF based on SATA
connector 3:	1 x 36 pin SFF-8643 female
connector 4:	1 x SATA 6 Gb/s 22 pin receptacle