

Delock USB Type-C™ Docking Station for 1 x U.2 SSD

Description

This Docking Station by Delock enables an external connection of one **U.2 SSD** through the USB interface.

Supports SuperSpeed USB 10 Gbps

A maximum data transfer rate of up to **USB 3.2 Gen 2 - 10 Gbps** can be reached.

Good cooling

The bottom consists of a **stable metal plate with cooling fins**. These provide a passive cooling for the inserted memory.



Item no. 63368

EAN: 4043619633685

Country of origin: China

Package: Retail Box

Technical details

- Connectors:
 - 1 x SuperSpeed USB 10 Gbps (USB 3.2 Gen 2) USB Type-C™ female
 - 1 x U.2 SFF-8639 female
 - 1 x DC jack
- Chipset: Asmedia ASM2362
- Function key: 1 x On / Off switch
- Data transfer rate up to 10 Gbps
- LED indicator for power and access
- Supports S.M.A.R.T.
- Supports TRIM
- Supports UASP
- Plug & Play
- Bootable
- Colour: black
- Dimensions (LxWxH): ca. 138 x 80 x 23 mm

Power supply specification

- Wall power supply

- Input: AC 100 ~ 240 V / 50 ~ 60 Hz / 1.5 A
 - Output: 12.0 V / 3.0 A
 - Ground outside, plus inside
 - Dimensions:
 - inside: \varnothing ca. 2.1 mm
 - outside: \varnothing ca. 5.5 mm
 - length: ca. 10 mm
-

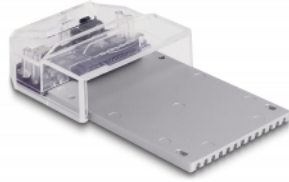
System requirements

- Android 10.0 or above
 - Chrome OS
 - Linux Kernel 5.11 or above
 - Mac OS 11.2.3 or above
 - Windows 8.1/8.1-64/10/10-64/11
 - iPad Air (4th Generation) or above
 - iPad Pro (3rd Generation) or above
 - Surface Pro 7
 - PC or laptop with a free USB Type-A port or
 - Device with a free USB Type-C™ port or with a free Thunderbolt™ 3 port
-

Package content

- Docking station
- Cable USB-C™ male to USB-C™ male, length ca. 80 cm
- Cable USB-C™ male to USB Type-A male, length ca. 80 cm
- External power supply 12.0 V / 3.0 A
- Screws
- User manual

Images



General

Function:	Plug & Play bootable TRIM S.M.A.R.T.
Suitable for data medium:	2.5"
Supported operating system:	Chrome OS Surface Pro 7 Windows 10 32-Bit Windows 10 64-Bit Windows 8.1 32-Bit Windows 8.1 64-Bit Android 10.0 or above iPad Pro (3rd Generation) or above iPad Air (4th Generation) or above Mac OS 11.2.3 or above Windows 11 Linux Kernel 5.11 or above

Interface

External:	1 x DC jack 5.5 x 2.1 mm 1 x USB 10 Gbps USB Type-C™ female
Internal:	1 x U.2 SFF-8639 female

Technical characteristics

Chipset:	Asmedia ASM2362
Data transfer rate:	10 Gbps

Physical characteristics

Length:	138 mm
Width:	80 mm
Height:	23 mm