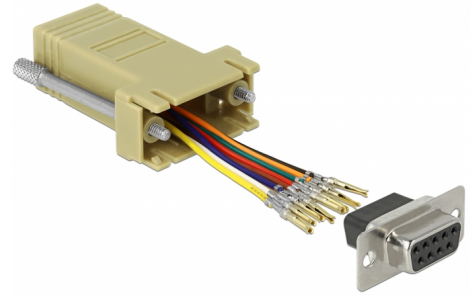


Delock D-Sub 9 pin female to RJ45 female Assembly Kit grey

Description

This adapter by Delock can be used to expand a serial interface by using an optional Cat.5 / 5e / 6 cable. Thereby one can set the pin assignment individually. Just plug the cable end into the desired hole of the connector and let it lock into the housing.



Item no. 66164

EAN: 4043619661640

Country of origin: China

Package: Zip poly bag

Technical details

- Connectors:
 - 1 x serial D-Sub 9 pin female >
 - 1 x RJ45 jack
- RJ45 interface assigned with 8 pins, serial interface individually assignable
- Serial female port with screws
- Dimensions incl. connector (LxWxH): ca. 52 x 34 x 16 mm
- Colour: grey

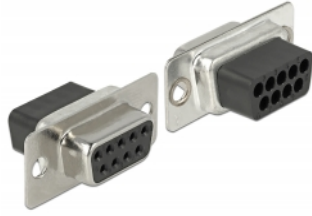
System requirements

- A free D-Sub 9 pin male port or
- A free RJ45 plug

Package content

- Adapter

Images



PIN	Farbe / Color
1	● Blau / Blue
2	● Orange / Orange
3	● Schwarz / Black
4	● Rot / Red
5	● Grün / Green
6	● Gelb / Yellow
7	● Braun / Brown
8	○ Weiß / White

Interface

connector:	1 x Sub-D 9 pin female
Connector 1:	1 x RJ45 jack

Physical characteristics

Housing colour:	grey
Housing material:	Plastic
Length:	52 mm
Width:	34 mm
Height:	16 mm