

# Delock D-Sub15 male to Terminal Block with Enclosure

## Description

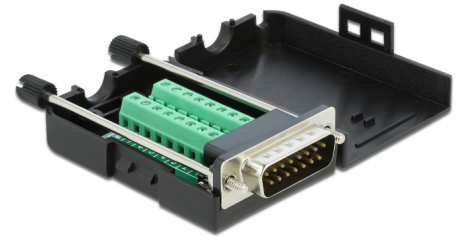
This terminal block adapter by Delock can be used to connect bare wires. Thus the adapter is not only convenient for special industry applications, but also for the hobby area, e.g. railway modelling.

### Protection by enclosure

The plastic enclosure protects the PCB from dirt and damage.

### Strain relief

The screw-on strain relief fixes the cable in the enclosure.



**Item no. 66566**

EAN: 4043619665662

Country of origin: Taiwan,  
Republic of China

Package: Zip poly bag

## Technical details

- Connectors:
  - 1 x serial D-Sub15 male (2 rows) with screws
  - 1 x 16 pin terminal block
- Pin assignment: 1:1
- Pitch: 3.81 mm
- Useable for a cable gauge from 26 to 18 AWG
- Operating temperature: -20 °C ~ 105 °C
- Dimensions (LxWxH): ca. 78 x 42 x 21 mm

## System requirements

- A free D-Sub15 female

## Package content

- Adapter
- 1 x strain relief
- 2 x locking screws

## Images



## Interface

Connector 1:	1 x Serial Sub-D15 male with screws
Connector 2:	1 x 16 pin terminal block

## Technical characteristics

Operating temperature:	-20 °C ~ 105 °C
------------------------	-----------------

## Physical characteristics

Pitch distance:	3.81 mm
Conductor gauge:	26 - 18 AWG
Length:	78 mm
Width:	42 mm
Height:	21 mm