

Delock D-Sub15 male to Terminal Block with Enclosure

Description

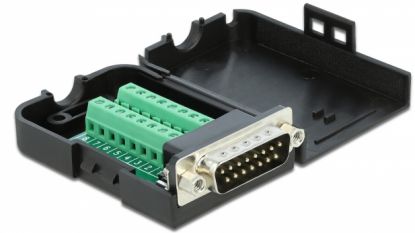
This terminal block adapter by Delock can be used to connect bare wires. Thus the adapter is not only convenient for special industry applications, but also for the hobby area, e.g. railway modelling.

Protection by enclosure

The plastic enclosure protects the PCB from dirt and damage.

Strain relief

The screw-on strain relief fixes the cable in the enclosure.



Item no. 66568

EAN: 4043619665686

Country of origin: Taiwan,
Republic of China

Package: Zip poly bag

Technical details

- Connectors:
 - 1 x serial D-Sub15 male (2 rows) with nuts
 - 1 x 16 pin terminal block
- Pin assignment: 1:1
- Pitch: 3.81 mm
- Useable for a cable gauge from 26 to 18 AWG
- Operating temperature: -20 °C ~ 105 °C
- Dimensions (LxWxH): ca. 71 x 42 x 21 mm

System requirements

- A free D-Sub15 female

Package content

- Adapter
- 1 x strain relief
- 2 x locking screws

Images



Interface

Connector 1:	1 x serial Sub-D15 male
Connector 2:	1 x 16 pin terminal block

Technical characteristics

Operating temperature:	-20 °C ~ 105 °C
------------------------	-----------------

Physical characteristics

Pitch distance:	3.81 mm
Conductor gauge:	26 - 18 AWG
Length:	78 mm
Width:	42 mm
Height:	21 mm