

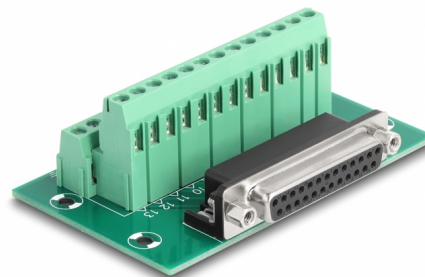
Delock D-Sub 25 pin female to Terminal Block for DIN rail

Description

This terminal block adapter by Delock can be used to connect wires with stripped ends.

DIN rail mounting

With the clips included in the delivery content, the adapter can be attached to a 15 mm or 35 mm wide DIN rail.



Item no. 66912

EAN: 4043619669127

Country of origin: China

Package: White Box

Technical details

- Connectors:
 - 1 x D-Sub 25 pin female
 - 1 x 26 pin terminal block
- Pin assignment: 1:1
- Pitch: 5.00 mm
- Useable for a cable gauge from 24 to 12 AWG
- DIN rail mounting: 15 mm and 35 mm
- Operating temperature: -40 °C ~ 100 °C
- Dimensions (LxWxH): ca. 86 x 51 x 30 mm

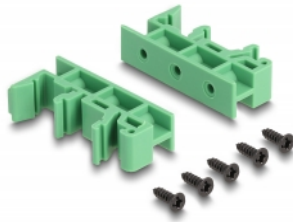
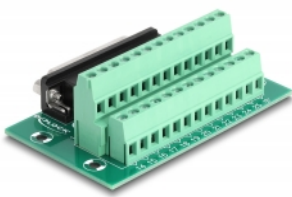
System requirements

- A free D-Sub 25 pin male
- 15 mm or 35 mm DIN rail

Package content

- Adapter
- 2 x DIN rail clip
- 5 x screws

Images



General

Mounting type:	DIN rail mounting: 15 mm and 35 mm
----------------	------------------------------------

Interface

Connector 1:	1 x D-Sub 25 pin female
Connector 2:	1 x 26 pin terminal block

Technical characteristics

Operating temperature:	-40 °C ~ 100 °C
------------------------	-----------------

Physical characteristics

Pitch distance:	5.00 mm
Conductor gauge:	24 to 12 AWG
Length:	86 mm
Width:	51 mm
Height:	30 mm