

Delock Easy 45 Module D-Sub 9 pin male to 6 pin Terminal Block 22.5 x 45 mm

Description

This Easy 45 module by Delock is designed to provide a D-Sub male port. The simple snap-in mechanism ensures that the module is firmly in place and can be easily removed if necessary.

Easy 45 connects

Easy 45 is a variable, modular system that allows components such as sockets, HDMI or USB connections to be added according to your needs. The Easy 45 modules are standardised and can be mounted in various module holder or cable ducts. Easy 45 builds the interface between electrical, network and system installation and many peripheral devices such as TV, monitors, printers, laptops and much more.



Item no. 81349

EAN: 4043619813490

Country of origin: China

Package: Zip poly bag

Technical details

- Connectors:
 - external: 1 x D-Sub 9 pin male
 - internal: 1 x 6 pin terminal block screw terminal
- Material: PC plastic
- Suitable for module holder Delock Easy 45
- Suitable for 45 mm cable duct with minimum depth 45 mm
- Module size: 22.5 x 45 mm
- Dimensions (LxWxH): ca. 22.5 x 45.0 x 25.0 mm
- Colour: white

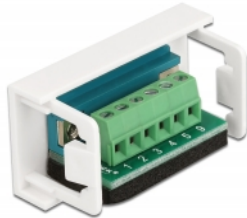
System requirements

- A free module port Delock Easy 45

Package content

- Easy 45 module

Images



General

Mounting type:	Easy 45
----------------	---------

Interface

connector:	1 x Sub-D 9 pin male
Connector 1:	1 x 6 Pin Terminalblock Schraubklemme

Physical characteristics

Housing material:	Plastic
Length:	32 mm
Width:	22.5 mm
Height:	45 mm
Colour:	RAL 9003 Weiß