

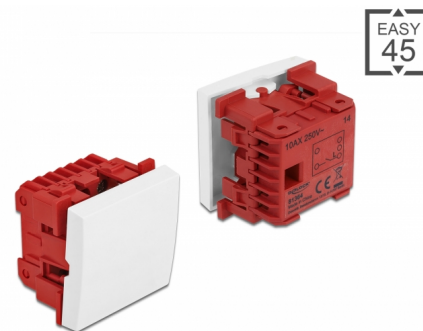
Delock Easy 45 1-gang push button 45 x 45 mm, white

Description

This Easy 45 2-gang switch by Delock is designed to switch light sources and power supplies on and off. The simple snap-in mechanism ensures that the switch is firmly in place and can be easily removed if necessary.

Easy 45 connects

Easy 45 is a variable, modular system that allows components such as sockets, HDMI or USB connections to be added according to your needs. The Easy 45 modules are standardised and can be mounted in various module holder or cable ducts. Easy 45 builds the interface between electrical, network and system installation and many peripheral devices such as TV, monitors, printers, laptops and much more.



Item no. 81364

EAN: 4043619813643

Country of origin: China

Package: Box

Technical details

- Connectors: 2 x screw terminal
- Switch type: 1-pole, 1-way (make contact)
- Switching voltage: AC 250 V~
- Switching current: 10 AX
- Material: nylon / PC plastic
- Suitable for module holder Delock Easy 45
- Suitable for 45 mm cable duct with minimum depth 45 mm
- Module size: 45 x 45 mm
- Dimensions (LxWxH): ca. 45 x 45 x 37 mm
- Colour: white

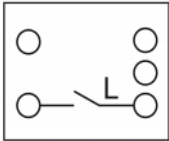
System requirements

- A free module port Delock Easy 45 (45 x 45 mm)

Package content

- Easy 45 push button
- User manual

Images



Interface

Connector 1:	1 x 3 pin terminal block screw terminal
--------------	---

Physical characteristics

Length:	45 mm
Width:	45 mm
Height:	37 mm
Colour:	RAL 9003 Weiß