

# Delock Optical Fiber Connection Box for DIN rail with splice holder and 2 x LC Duplex coupler

## Description

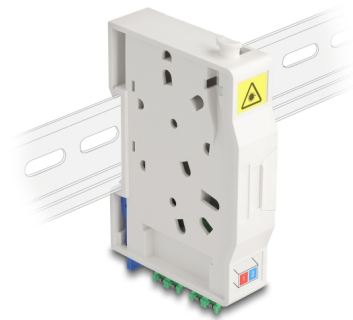
This FTTH optical fiber connection box by Delock is ideal for quickly and securely setting up the fiber optic network in buildings. It can accommodate up to two SC Simplex or LC Duplex couplers.

### Connection box for DIN rail mounting

The integrated clips allow the mounting on 35 mm DIN rail.

### With splice holder

The integrated splice holder enables clean routing of the individual fibers for optimal transmission of lightwave signals.



**Item no. 85936**

EAN: 4043619859368

Country of origin: China

Package: White Box

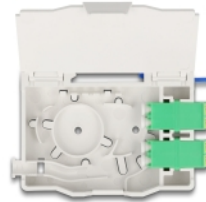
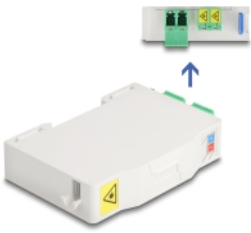
## Technical details

- Optical fiber connection box for FTTH applications
- Connection box with 2 x LC Duplex couplers
- 2 slots for SC Simplex or LC Duplex couplings
- DIN rail mounting: 35 mm
- With splice holder
- Protective flip
- Housing colour: white
- Housing material: ABS
- Dimensions (LxWxH): ca. 85.0 x 60.6 x 18.0 mm

## Package content

- Optical fiber connection box
- 2 x LC Duplex coupler
- 4 x heat shrink splice protection

## Images



## General

Mounting type:	DIN rail mounting: 35 mm
----------------	--------------------------

## Physical characteristics

Material:	ABS
Length:	85 mm
Width:	60.6 mm
Height:	18.0 mm
Colour:	white