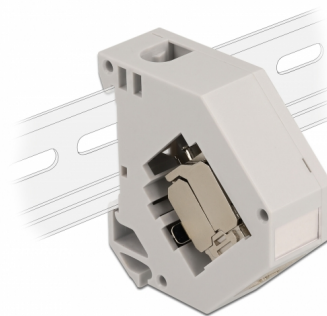


Delock DIN rail Adapter with Keystone Module RJ45 jack Cat.6A LSA

Description

This adapter by Delock contains a suitable keystone module with an RJ45 jack that can be used to connect a network cable. At the same time, the adapter can be attached to a 35 mm wide DIN rail to enable e.g. the installation in a network cabinet. The adapter also has a small labelling field which can be individually labelled or provided with various symbols.



Item no. 86014

EAN: 4043619860142

Country of origin: China

Package: Zip poly bag

Technical details

- Connectors:
 - 1 x RJ45 jack >
 - 1 x Cat.6A LSA (toolfree)
- Cat.6A specification
- Shielded (STP)
- DIN rail mounting: 35 mm
- Stackable
- With labelling field
- For cable diameter from 6.0 - 8.5 mm
- For solid or stranded wire (23 - 26 AWG)
- Operating temperature: -40 °C ~ 85 °C
- Material: plastic, metal
- Colour: grey
- Dimensions (LxWxH): ca. 60.1 x 59.4 x 21.6 mm

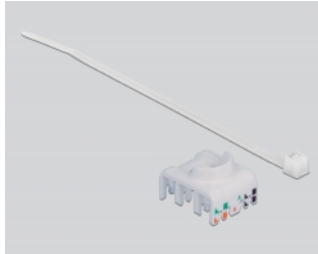
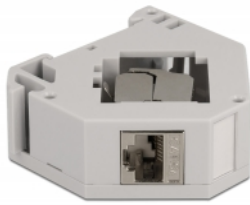
System requirements

- 35 mm DIN rail

Package content

- DIN rail adapter with Keystone module
- Cable manager
- Zip-tie

Images



General

Mounting type:	DIN rail mounting: 35 mm
----------------	--------------------------

Interface

Connector 1:	1 x RJ45 jack
Connector 2:	Cat.6A

Technical characteristics

Operating temperature:	-40 °C ~ 85 °C
------------------------	----------------

Physical characteristics

Conductor gauge:	23 - 26 AWG
Material:	plastic, metal
Length:	60.1 mm
Width:	59.4 mm
Height:	21.6 mm
Colour:	grey
Cable diameter:	6.0 - 8.5 mm