

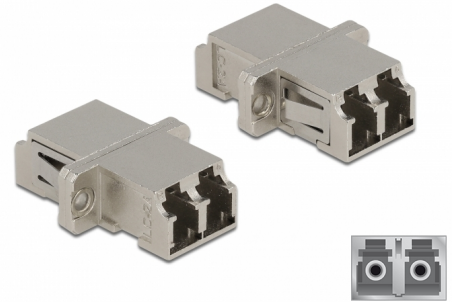
Delock Optical Fiber Coupler LC Duplex female to LC Duplex female Single-mode metal

Description

With this LC Duplex coupling by Delock, optical fiber male connectors can be easily connected to each other. The coupling enables a direct connection to the optical fiber cable and is suitable for simple mounting in optical fiber connection boxes, cabinets and patch panels.

Protection by dust cover

The coupling is equipped with an appropriate cap to protect the sleeve from dust and to keep it clean.



Item no. 86874

EAN: 4043619868742

Country of origin: China

Package: Zip poly bag

Technical details

- Connectors:
 - 1 x LC Duplex female >
 - 1 x LC Duplex female
- For single-mode fiber
- Ceramic sleeve
- With dust cover
- Mounting via metal holder or screws
- 2 x mounting holes
- Mounting hole diameter: 2.3 mm
- Pitch of screw hole: ca. 18 mm
- Panel cut-out (WxH): ca. 13.4 x 9.5 mm
- Operating temperature: -20 °C ~ 70 °C
- Material: metal
- Dimensions (LxWxH): ca. 29.2 x 12.7 x 9.3 mm

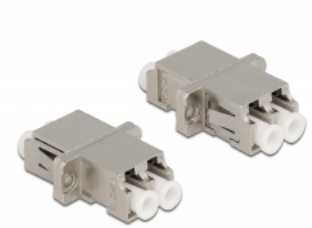
System requirements

- A free LC Duplex plug

Package content

- LC Duplex coupler

Images



Interface

Connector 1:	1 x LC Duplex female
Connector 2:	1 x LC Duplex female

Technical characteristics

Operating temperature:	-20 °C ~ 70 °C
------------------------	----------------

Physical characteristics

Material:	metal
Length:	29.2 mm
Width:	12.7 mm
Height:	9.3 mm