

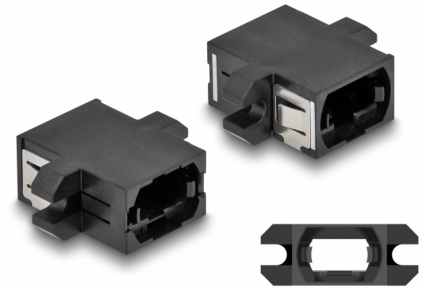
Delock Optical Fiber Coupler MPO female to MPO female black

Description

With this MPO coupling by Delock, two MPO male connectors can be easily connected to each other. The coupling enables a direct connection with the MPO optical fiber cables and is suitable for simple mounting in optical fiber connection boxes, cabinets, HD cassettes and patch panels.

Protection by dust cover

The coupling is equipped with an appropriate cap to protect the sleeve from dust and to keep it clean.



Item no. 87932

EAN: 4043619879328

Country of origin: China

Package: Zip poly bag

Technical details

- Connectors:
 - 1 x MPO female
 - 1 x MPO female
- Key-up to key-down direction
- With dust cover
- Mounting via metal holder or screws
- 2 x mounting holes
- Mounting hole diameter: ca. 4 mm
- Pitch of screw hole: ca. 20 mm
- Panel cut-out (WxH): ca. 14.8 x 9.8 mm
- Operating temperature: -40 °C ~ 85 °C
- Colour: black
- Material: plastic
- Dimensions (LxWxH): ca. 25.0 x 19.8 x 9.8 mm

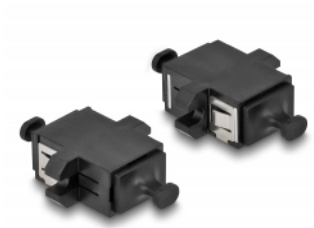
System requirements

- A free MPO male port

Package content

- MPO coupler

Images



Interface

Connector 1:	1 x MPO female
Connector 2:	1 x MPO female

Technical characteristics

Operating temperature:	-40 °C ~ 85 °C
------------------------	----------------

Physical characteristics

Material:	Plastic
Length:	25.0 mm
Width:	19.8 mm
Height:	9.8 mm
Colour:	black