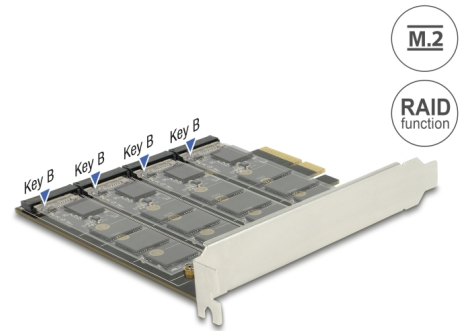


Delock PCI Express x4 Card > 4 x internal M.2 Key B with RAID

Description

This PCI Express card by Delock expands the PC by four M.2 slots. Up to four M.2 SATA modules can be connected in format 2280, 2260, 2242, 2230 with this card. When using more than one SSD, there is the possibility to use different RAID level.



Item no. 89888

EAN: 4043619898886

Country of origin: China

Package: Box

Technical details

- Connectors:
 - internal:
 - 4 x 67 pin M.2 key B slot
 - 1 x PCI Express x4
- Chipset: Marvell 88SE9230
- Interface: SATA
- Supports M.2 modules in format 2280, 2260, 2242 and 2230 with key B or key B+M based on SATA
- Maximum height of the components on the module: 1.5 mm, application of double-sided assembled modules supported
- Data transfer rate up to 6 Gb/s
- Supports RAID 0, 1, 10

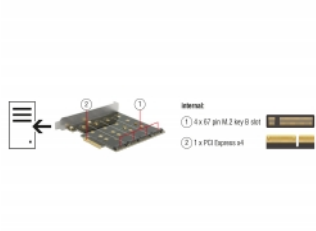
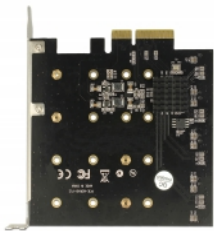
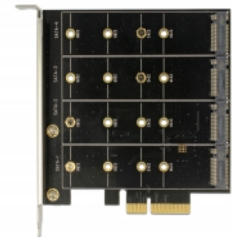
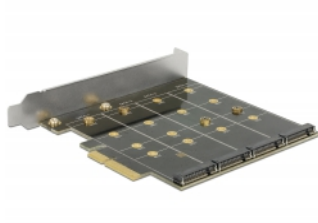
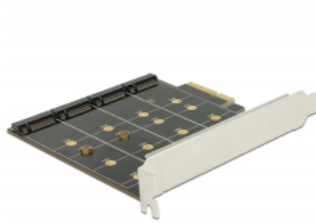
System requirements

- Windows 8.1/8.1-64/10/10-64, ex Linux Kernel 2.6
- PC with one free PCI Express x4 / x8 / x16 / x32 slot

Package content

- PCI Express card
- Screwdriver
- Driver CD
- User manual

Images



General

| | |
|---|---|
| Supported operating system: | Linux Kernel 2.6 or above Windows 10 32-Bit Windows 10 64-Bit Windows 8.1 32-Bit Windows 8.1 64-Bit |
| Slot: | SATA |
| Supported module: | M.2 modules in format 2280, 2260, 2242 and 2230 with key B or key B+M based on SATA |
| Maximum height of the components on the module: | 1.5 mm application of double-sided assembled modules supported |

Interface

| | |
|-----------|---|
| Internal: | 1 x PCI Express x4 4 x 67 pin M.2 key B slot |
|-----------|---|

Technical characteristics

| | |
|---------------------|------------------|
| Chipset: | Marvell 88SE9230 |
| Data transfer rate: | 6 Gb/s |
| RAID function: | 10 0 1 |

Physical characteristics

| | |
|---------------|----------|
| Slot bracket: | standard |
|---------------|----------|