

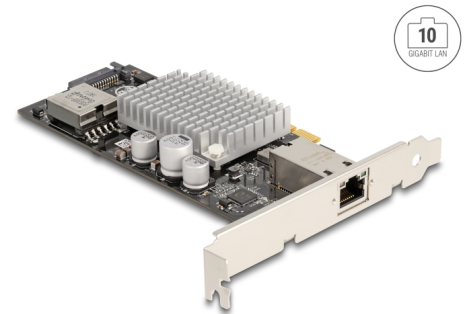
Delock PCI Express Card to 1 x 10GBase-T LAN PoE+ RJ45

Description

This PCI Express card by IOI offers one network port with a data transfer rate up to 10 Gbps. The RJ45 port supports Power over Ethernet according to IEEE 802.3at, so you can supply power to PoE-enabled devices, such as an IP camera or a PoE splitter via the network cable.

Multi-Gigabit

The PCIe card supports 10GBase-T according to the standard IEEE 802.3an, 5G and 2.5G Ethernet, as well as 1000BASE-T.



Item no. 90434

EAN: 4043619904341

Country of origin: Taiwan,
Republic of China

Package: White Box

Technical details

- IOI item number: GE10P-PCIE4XG301
- Connector:
 - external:
 - 1 x 10 Gigabit LAN RJ45 jack with screw nuts
 - internal:
 - 1 x SATA 15 pin power connector
 - 1 x PCI Express x4, V3.0
- Chipset: Aquantia AQC107
- Data transfer rate:
 - Fast Ethernet up to 100 Mbps
 - Gigabit Ethernet up to 1 Gbps
 - NBASE-T (draft) with up to 2.5 Gbps and 5 Gbps
 - 10 Gigabit Ethernet up to 10 Gbps
- Supports Full Duplex flow control (IEEE 802.3x)
- Supports IEEE 802.3 10Base-T and 802.3u 100Base-TX
- Supports IEEE 802.1P Layer 2 Priority Encoding
- Supports IEEE 802.1Q VLAN tagging
- Supports 16k Jumbo frames

- Supports IEEE 802.3at Power Sourcing Equipment (PSE)
 - Power delivery: max. 30 W total
 - PoE power input from PCIe or SATA 15 pin power connector
-

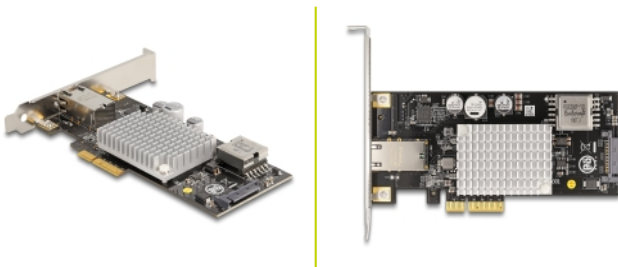
System requirements

- Linux Kernel 3.12 or above
 - Windows 7/7-64/8.1/8.1-64/10/10-64
 - PC with one free PCI Express x4 / x8 / x16 / x32 slot
-

Package content

- PCI Express card
 - Driver CD
 - User manual
-

Images



General

Supported operating system:	Linux Kernel 3.12 or above Windows 10 32-Bit Windows 10 64-Bit Windows 7 32-Bit Windows 7 64-Bit Windows 8.1 32-Bit Windows 8.1 64-Bit
-----------------------------	--

Interface

External:	1 x 10 Gigabit LAN RJ45 jack
Internal:	1 x PCI Express x4, V3.0 1 x SATA 15 pin power connector