

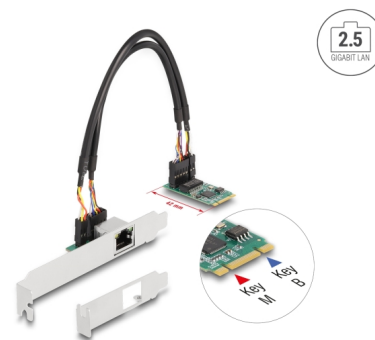
# Delock M.2 Key B+M 1 x RJ45 2.5 Gigabit LAN Network Card

## Description

This M.2 PCIe module by Delock expands a system by **one 2.5 Gigabit LAN interface**, which can be lead out via the slot bracket.

### NBASE-T for higher speed

Modern services and new technologies require higher bandwidths. NBASE-T technology enables speeds of **1 Gbps and 2.5 Gbps with conventional networking cables**. The best possible transmission rate is set automatically.



**Item no. 95272**

EAN: 4043619952724

Country of origin: China

Package: Box

## Technical details

- Connectors:
  - internal: 1 x 59 pin M.2 key B+M male
  - external: 1 x 2.5 Gigabit LAN RJ45 jack
- Chipset: Intel i225V
- Interface: PCIe 2.0
- Form factor: M.2 2242
- Suitable for M.2 slot with key M or B+M based on PCIe
- Data transfer rate:
  - Ethernet up to 10 Mbps (Half/Full Duplex)
  - Fast Ethernet up to 100 Mbps (Half/Full Duplex)
  - Gigabit Ethernet up to 1000 Mbps (Half/Full Duplex)
  - NBASE-T with up to 2.5 Gbps
  - PCI Express x1 up to 4 Gbps
- Supports IEEE 802.3 / 802.3u / 802.3ab
- Supports PXE
- Supports Wake On LAN (WOL)
- Supports 9k Jumbo Frames
- LED indicator for link and activity
- Cable length with connectors: ca. 25 cm

---

## System requirements

- Windows 10/11
- A free M.2 key M slot
- PC with one free slot

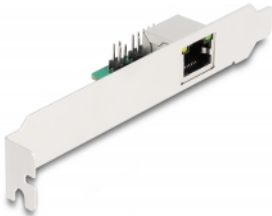
---

## Package content

- Converter
- 2 connecting cable
- Slot bracket
- Low profile bracket
- Driver CD
- User manual

---

## Images



## General

Form factor:	M.2 2242
Supported operating system:	Windows 10 32-Bit Windows 10 64-Bit Windows 11

## Interface

External:	1 x RJ45 jack
Internal:	1 x 59 pin M.2 key B+M male

## Technical characteristics

Chipset:	Intel® i225
Data transfer rate:	Ethernet up to 10 Mbps Fast Ethernet up to 100 Mbps Gigabit Ethernet up to 1 Gbps Gigabit Ethernet up to 2.5 Gbps

## Physical characteristics

Cable length incl. connector:	25 cm
Slot bracket:	Low Profile standard